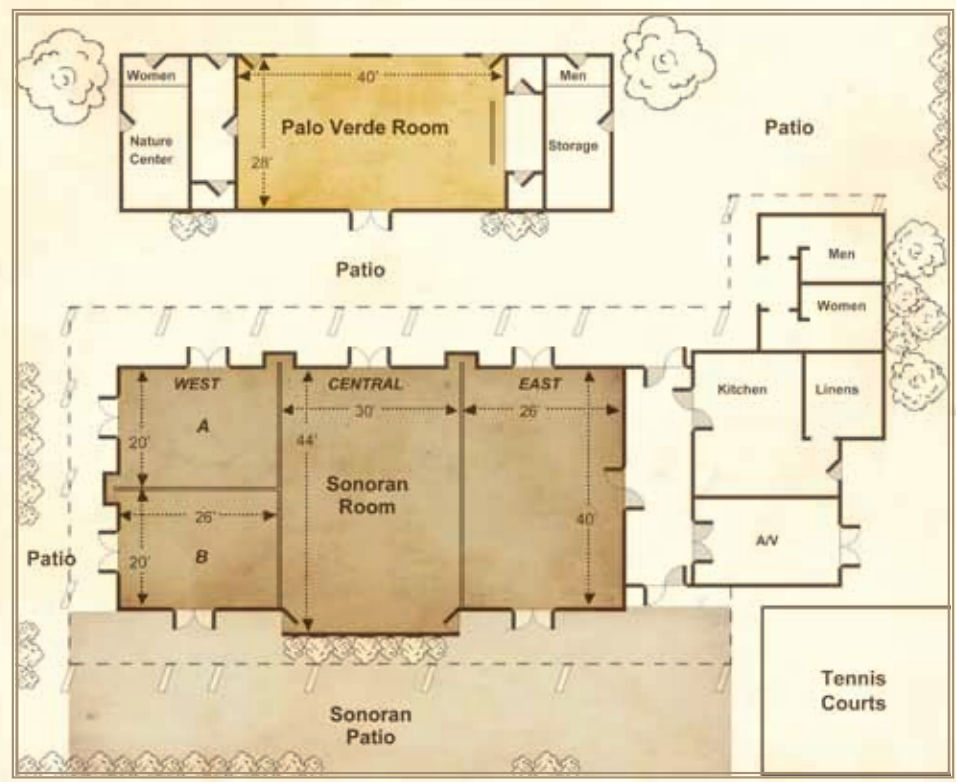


MEETING & CONFERENCE SPACE

PALO VERDE CONFERENCE CENTER



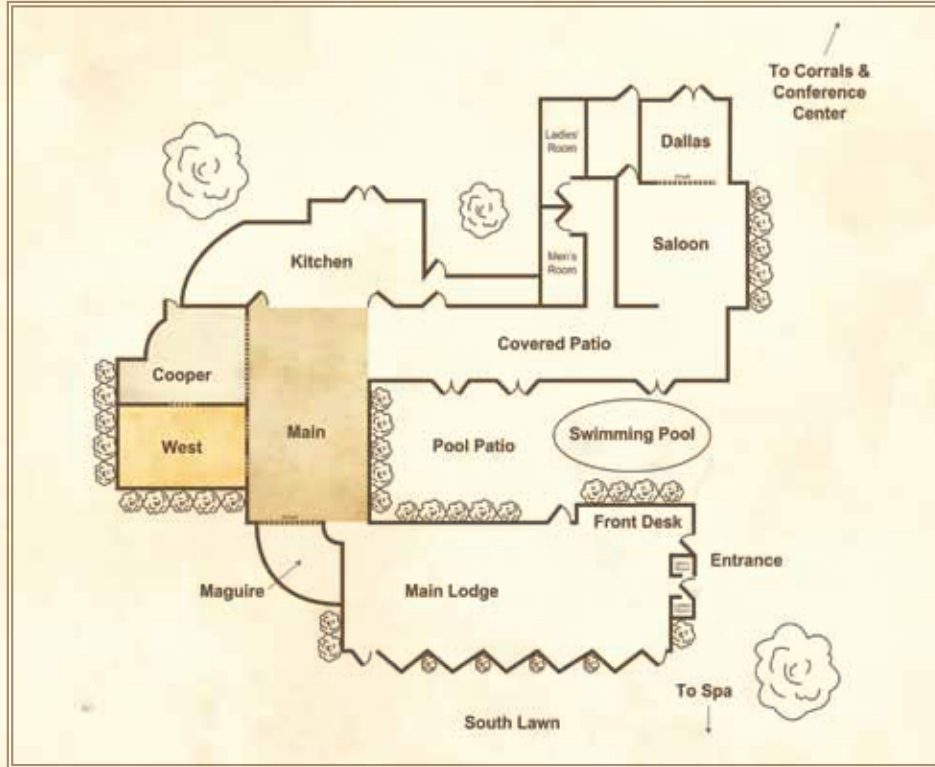
CAPACITIES CHART

ROOM	SIZE	CEILING HEIGHT	RECEPTION OR THEATER	BANQUET	SCHOOL ROOM
Sonoran	82 x 40	14' - 16'	275	220	200
Sonoran - <i>Central</i>	30 x 44	16'	132	100	80
Sonoran - <i>East or West</i>	26 x 40	14'	110	72	60
Sonoran - <i>West A or B</i>	26 x 40	14'	50	40	30
Palo Verde Room	28 x 40	9'	115	80	60
Sonoran Patio	113 x 36	—	250	200	—



CAPACITIES CHART

MAIN LODGE AND DINING



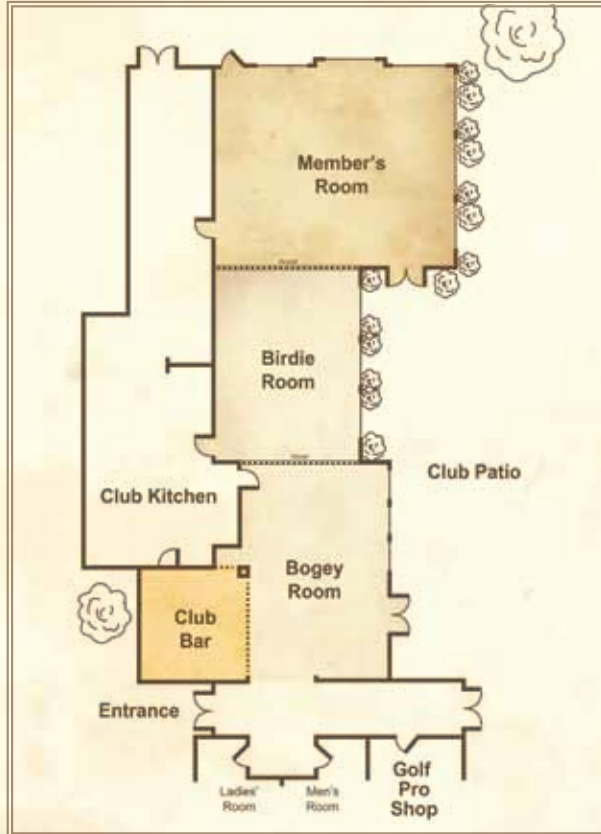
CAPACITIES CHART

ROOM	SIZE	CEILING HEIGHT	SEATING CAPACITY
Dallas Room	N/A	N/A	25
Pool Patio	N/A	N/A	84
Covered Patio	N/A	N/A	50
Ranch Main Dining Room	36 x 65	11'	80
West Room	25 x 40	8'	45
Cooper Room	27 x 30	8'	35
Maguire Room	15 x 20	8'	18
South Lawn	69 x 75	N/A	250 (theater)/180 (banquet)



CAPACITIES CHART

LOS CABALLEROS GOLF CLUB



CAPACITIES CHART

ROOM	SIZE	CEILING HEIGHT	BANQUET SEATING CAPACITY
Member's Room	48 x 42	20'	125
Birdie Room	30 x 40	14'	48
Bogey Room	30 x 45	20'	48
Club Bar	22 x 24	8'	14
Club Patio	18 x 85	—	50 (theater)/32 (standard)

Maximum capacity at golf club is 125 people