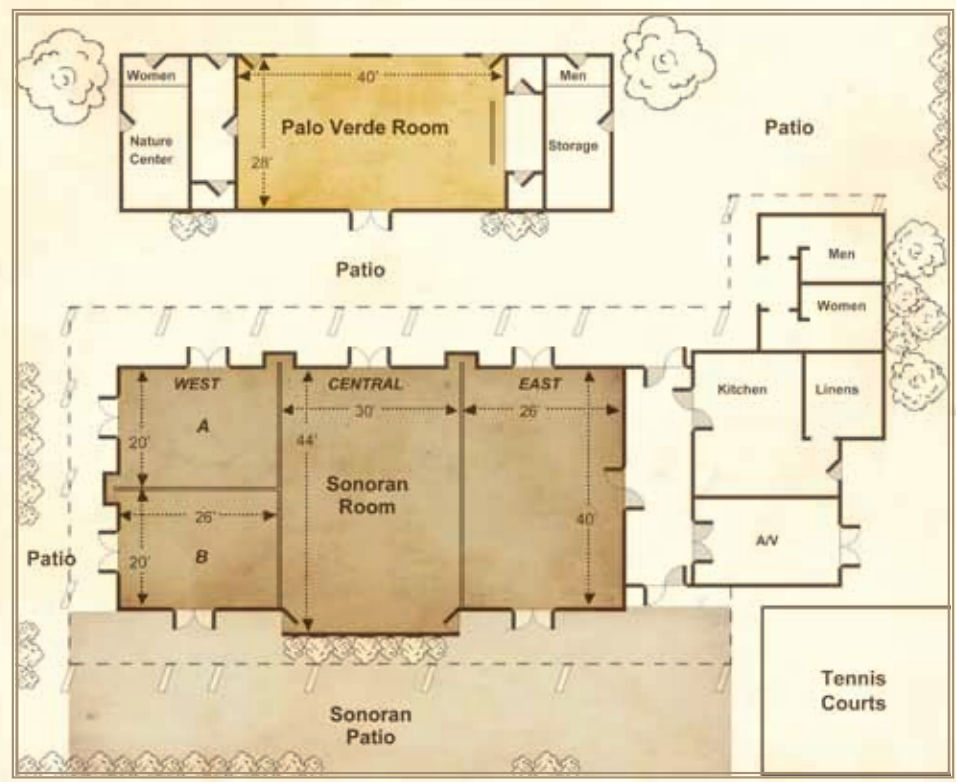


MEETING & CONFERENCE SPACE

PALO VERDE CONFERENCE CENTER



CAPACITIES CHART

| ROOM | SIZE | CEILING HEIGHT | RECEPTION OR THEATER | BANQUET | SCHOOL ROOM |
|------------------------|----------|----------------|----------------------|---------|-------------|
| Sonoran | 82 x 40 | 14' - 16' | 275 | 220 | 200 |
| Sonoran - Central | 30 x 44 | 16' | 132 | 100 | 80 |
| Sonoran - East or West | 26 x 40 | 14' | 110 | 72 | 60 |
| Sonoran - West A or B | 26 x 40 | 14' | 50 | 40 | 30 |
| Palo Verde Room | 28 x 40 | 9' | 115 | 80 | 60 |
| Sonoran Patio | 113 x 36 | — | 250 | 200 | — |